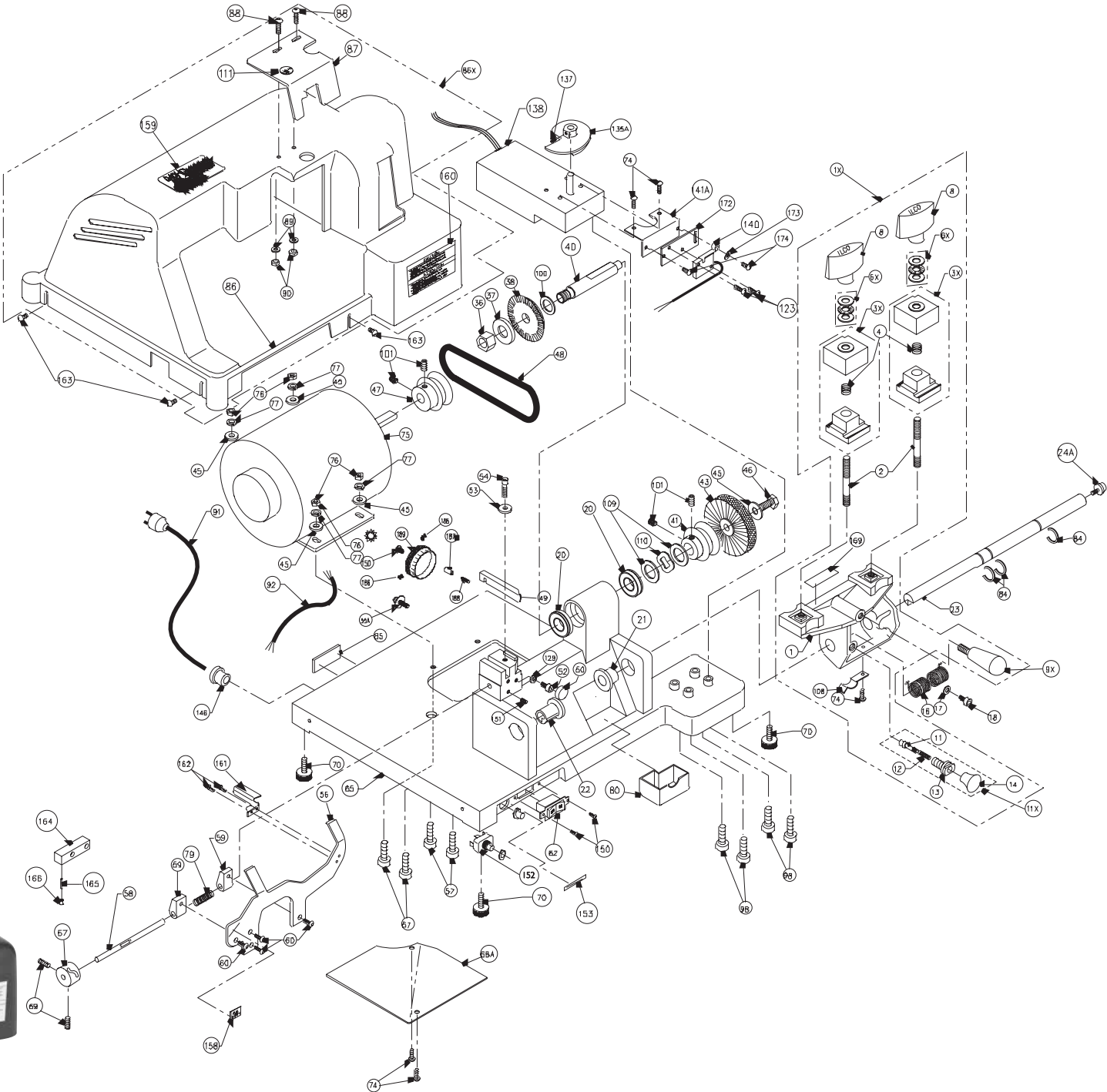


# 040 HD



# 040 HD

	Description	Part Number	Item Number		Description	Part Number	Item Number
1	Carriage	040HD-1	132681M	69	Set Screw 10-24 X 3/8"	040-69	131812
1X	Carriage Assembly	040HD-1X	502613	70	Rubber Mount	040-70	129849
2	Carriage Stud	025-2	BD0328XXXX	74	Truss Head Screw	040-74	1103379P
3X	Vise Jaw assembly	045HD-3X	BD0053XXXX	75	Motor, 1/4 HP, 115V, C/S	040-75	131505
4	Vise Jaw Spring	025-4	1103495P	79	Key Gauge Spring	040-79	131810
6X	Thrust Bearing Set	025-6X	BD0222XXXX	84	Crescent Ring	024B-84	1102033P
8	Wing Nut	025-8	BD0329XXXX	86X	Safety Hood Assembly	040HD-86X	502612
9X	Carriage Handle	040-9X	131516M	87	Safety Shield	040HD-87	129133
11X	Trigger Assembly	040-11X	BD0387XXXX	90	Nut, 10-32	025-90	151300
16	Carriage Torsion Spring	040-16	1105170P	91	Power Cord	040-91	1103290P
17	Washer	025-17	194251	92	Motor Cable	040-92	1103118P
18	Screw, 10-32 X 1/2"	025-18	174605	98	Cam Motor Screws	040-98	174114
20	Cutter Shaft Bearing	040HD-20	132666	100	Cutter Spacer, Right	040HD-100	132671
21	Carriage Shaft Bushing, Right	025-21	BD0361XXXX	101	Set Screw, 1/4-20 X 1/4"	025-101	174619
22	Carriage Shaft Bushing, Left	040-22	131803	106	Chip Tray	040-106	132021
23	Carriage Shaft	040HD-23	132008	108	Carriage Bumper	040-108	131799
24	Friction Reducer	040-24	131926	109	Bearing Washer	025-109	129031
36	Cutter Nut	025-36	151090	110	Wave Washer	025-110	194021
37	Cutter Spacer	025-37	1106180P	123	Screw, 4-40 X 1/4"	040-123	172018
38	P-CU20 Cutter	P-CU20	BC0219XXXX	129	Locking Nut (8-32)	040-129	151009
40	Cutter Shaft	040HD-40	132667	135	Cam	040-135	129106M
41	Cutter Shaft Pulley	040HD-41	502607M	137	Set Screw, 10-32 X 3/16"	040-137	174449
43	Nylon Brush (814-00-51)	025-43	BD0221XXXX	138	Gear Motor (115 Volt)	040-138	131506
45	Brush Bolt Washer, 5/16"	025-45	194080	140	Gear Motor Cam Switch	040-140	129877
46A	Hex Head Screw, 5/16"-18 X 3/4"	025-46A	174279	141A	Micro Switch Plate (Static)	040-141A	129076
47	Motor Pulley 2"-3L	025-47	129085	152	Automatic Cycle Switch	040-152	131808
48	V-Belt, 3L-170	040HD-48	132676	146	Strain Relief For Power Cord	040-146	129023
49	Cutter Guide (Stylus)	040-49	BD0544XXXX	150	Switch Screws (6-32 X 1/4")	040-150	1103395P
50	Carriage Stop	040-50	131123	151	Set Screw 8-32 X 3/8"	040-151	174619
52	Socket Head Screw, 8-32 X 1/2"	040-52	174081	153	Switch Panel Label	040HD-153	132680
53A	Cutter Guide Binding Plate	045-53A	129463	158	Key Gauge Label	040-158	131805
54	Cutter Guide Binding Screw	045-54	174153	160	Caution Label	040-160	131809
55A	Adjusting Screw	045-55A	129461	161	Key Gauge Guard	040-161	131778
56	Key Gauge	040-56	131797	162	Key Gauge Guard Screws	040-162	174034
58	Key Gauge Dowel Pin	040-58	131806	163	Hood Screw	045-163	1103379P
59	Key Gauge Housing (2)	025-59	1106113A	164	Cam Follower Block	040-164	131802
60	Cap Screw, 8-32 X 1/2"	025-60	1106155P	165	3/32" X 1/2 Dowel Pin	040-165	131800
62	On & Off Switch	040-62	BD0359XXXX	166	Cam Follower Pin	040-166	131804
65	Base Machined	040HD-65	502604M	169	Carriage Label	040-169	131841
67	Key Gauge Cam	040-67	131801	171	Cutter Pulley Set Screw	025-171	174144
68	Electrical Cover	040-68	131603	183	1/4-20 Lock Washer	040-183	194253

# 040 HD

	Description	Part Number	Item Number		Description	Part Number	Item Number
184	1/4-20 Hex Nut	040-184	151077	194	#10 Flat Washer	045-194	194272
186	6-32 X 3/8 Set Screw	045-186	129745	195	10-32 X 1/2 Button Head Screw	045-195	174152
187	Dowel	045-187	153009	N/S	Instruction Manual	040HD-IM	125189
188	Dowel Spring	045-188	199179	N/S	Hex Key 3/32		129014
189	Adjustment Dial	045-189	129467	N/S	Hex Key 5/32		129074
190	Cutter Guide Label	045-190	186066	N/S	Hex Key 1/8		129109
191	Switch Plate (Adjustable)	040-191	129077	N/S	Push Button Switch Boot		129844
192	Switch Plate Screws	040-192	1103379P	N/S	040 Sargent Guide		BD0600XXXX
193	Switch Plate Washers	040-193	194100	N/S	Circuit Breaker		1103128P